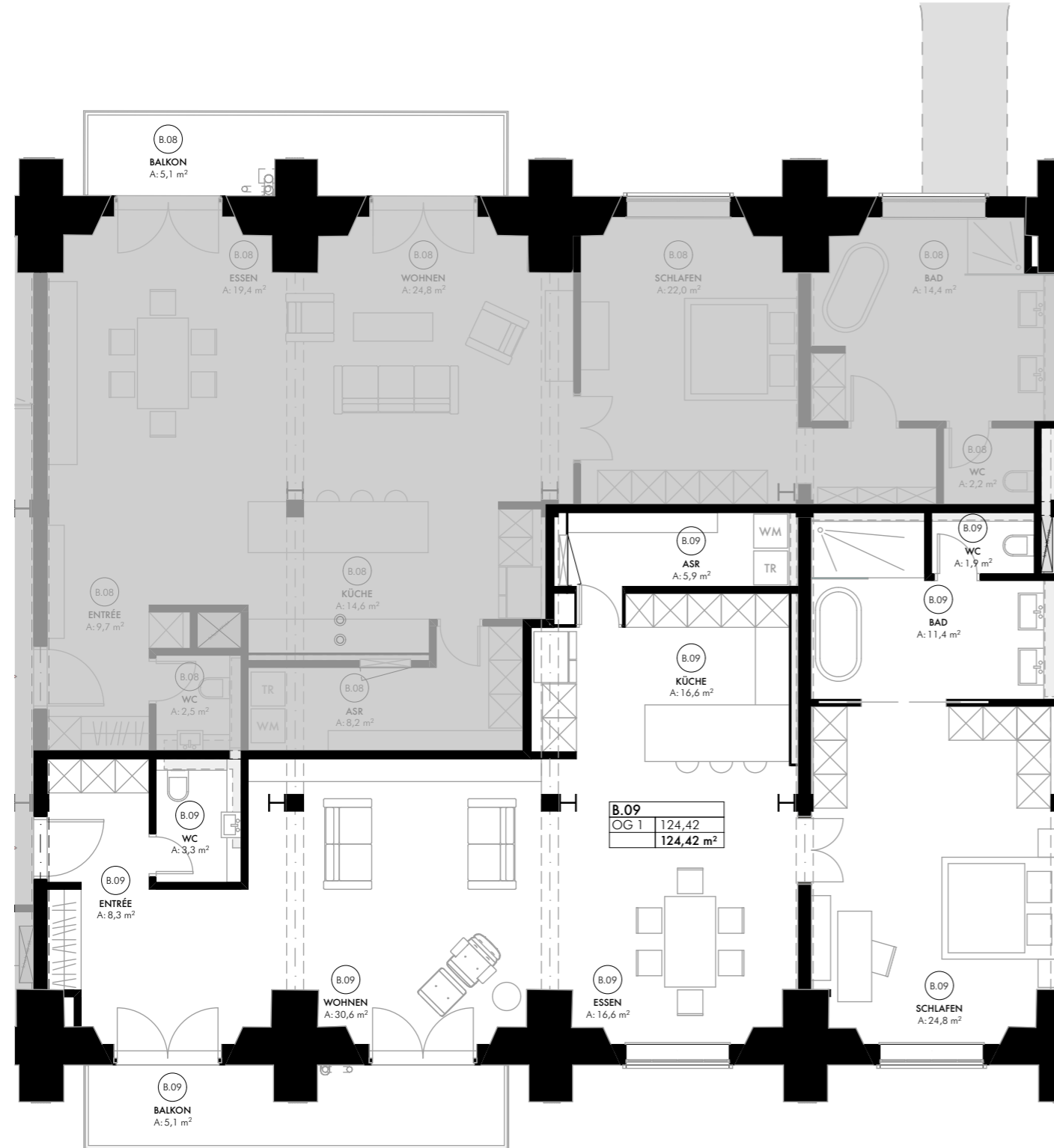


# GRUNDRISS

M = 1:100

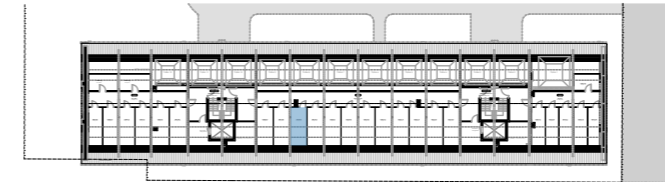
## OBERGESCHOSS 1



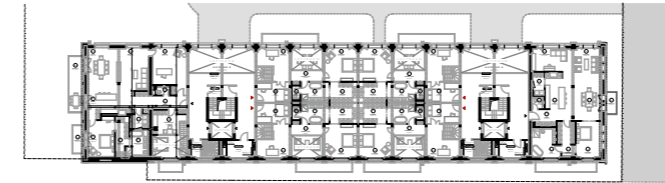
# LAGE IM HAUS

M = 1:1000

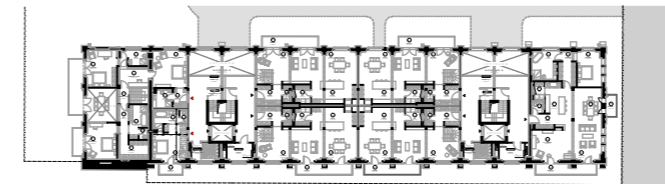
## DACHGESCHOSS



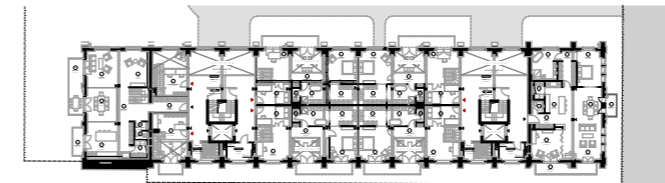
## OBERGESCHOSS 5



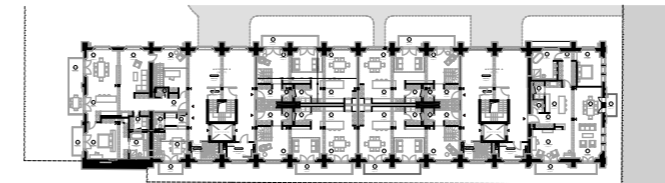
## OBERGESCHOSS 4



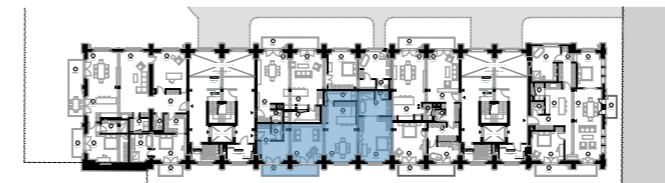
## OBERGESCHOSS 3



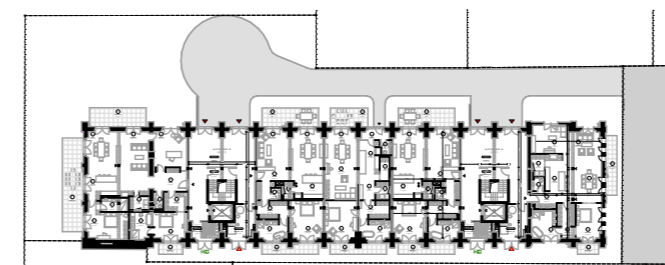
## OBERGESCHOSS 2



## OBERGESCHOSS 1



## ERDGESCHOSS



# DIE WOHNUNG

WOHNUNGS-NR: **B.09**

- grosser Wohn- und Essbereich
- offene Küche
- 1 Master Suite
- Balkon

## RAUMLISTE

### OBERGESCHOSS 1

ENTRÉE	8,33
WC	3,27
WOHNEN	30,56
ESSEN	16,56
KÜCHE	16,59
ASR	5,86
SCHLAFEN	24,77
BAD	11,42
WC	1,95
BALKON	5,11
	<b>124,42 m<sup>2</sup></b>